

# THREE PC CONTROL SOLUTIONS FROM ENTIVITY

1



## Entivity Studio v 7.0

**AVAILABLE**  
THIRD QUARTER 2002

Development license (PC-ENT-SDD) \$3,495.00  
Runtime license (PC-ENT-SDR) \$1,895.00



*Pardon our construction, at press time complete details on Studio 7.0 features and its release schedule were not available. Please check [www.entivity.com](http://www.entivity.com) for details on Studio 7.0*

### Includes:

- Advanced Visio graphics
- Flowchart logic
- Extended HMI creator
- Easy SQL interface
- Reuseable subcharts
- Superior HMI features
- Integrated serial communication
- Integrated motion control
- PID process control (64 loops)
- Powerful debugging tools
- Offline logic testing
- Common database for HMI, logic and motion
- Productivity Analysis tools

### Choose Studio when you need:

1. to communicate to a SQL database
2. a superior HMI with animation and advanced Visio graphics

### System requirements:

**Development:**  
700+MHz PIII CPU, 256MB RAM, 500MB (385 Studio/125MB Visio), HDD (not including OS), and 32 recommended/4 MB VRAM minimum

**Runtime:**  
700MHz PIII CPU, 256MB RAM, 500MB (385 Studio/125MB Visio) HDD (not including OS), and 4MB VRAM

2



Completely compatible with original Think&Do Development Software applications

## Think & Do Live!

Development/run-time license (PC-TND-LIVE) \$1,895.00

### Includes:

- Flowchart logic
- HMI creator
- Reuseable subcharts
- Integrated serial communication
- Integrated motion control
- PID process control (64 loops)
- Powerful debugging tools
- Offline logic testing
- Common database for HMI, logic and motion
- Productivity Analysis tools

### Choose Live! when:

- 1) HMI requirements are moderate
- 2) hardware costs must be kept to a minimum (See requirements below)
- 3) SQL communications are not required

### System requirements:

Pentium 133 MHz CPU or better  
64 MB RAM  
260 MB HDD (not including OS)

3

**NEW!**



The WinPLC is our lowest cost PC control solution

## The WinPLC, a hybrid PC/PLC solution

The WinPLC is a truly unique hybrid solution providing Entivity PC control programming benefits on a PLC-style device. Develop applications with either Entivity Studio or Think&Do Live! and download them to the WinPLC. Like PLCs, one development license serves unlimited WinPLC applications.

Use a WinPLC when you need:

1. The advantages of PC control: complex math, data manipulation and connectivity
2. A PLC's rugged industrial form, non-volatile memory and standard PLC I/O

Or when:

1. A standard OI will suffice for your HMI\*
2. You don't need a full power or priced PC

\*WinPLCs have no native HMI visualization

**Download projects to the WinPLC just like you would with a PC!**

### WinPLC CPU Modules

Studio	Think&Do Live!	Prices
H2-WPLC1-SD	H2-WPLC1-LV	\$689.00 (40 MHz)
H2-WPLC2-SD	H2-WPLC2-LV	\$759.00 (100MHz)

## Entivity DataPak (PC-ENT-DAP) \$495.00

Entivity's Data Acquisition Pack toolkit enables programmers to create applications that acquire real-time data from an Entivity runtime system. Interfaces include OPC, DDE, and VB/C++ programming control. For the WinPLC (or other CE-based platform), this kit allows monitoring, starting/stopping a station, and up/downloading existing project files.

The PC-ENT-DAP is compatible with all Entivity Studio and Think & Do Live! and Think & Do version 4.4 or later. Check for availability late third quarter 2002.

Check out <http://www.entivity.com> for more details



# PC CONTROL: THINK & DO LIVE! FROM ENTITY



## For control, HMI, motion, PID, and serial communications

Chances are you think your application out in flowcharts, so why not use them to program the control logic? Think & Do Live! is completely compatible with original Think & Do Development Software applications.

Entity's Think & Do Live! is a full-featured control and Human Machine Interface (HMI) development tool. A common tag database and built-in HMI make Live! a great low-cost PC-based control solution. Live! contains these features:

### Flowcharts for control

- Easy-to-use and easy-to-read flowcharts for control let you program like your machine or process operates, rather than one device at a time
- Subcharts (subroutine flowcharts) let you develop your logic once and re-use it on multiple projects
- Online changes are supported with graphical debugging to simplify troubleshooting your application
- Develop for Windows 2000, NT and CE platforms in the same environment

### Built-in HMI with same database

- Full screen editor with over 2000 bitmapped graphic symbols, such as buttons, lights, pumps, motors, conveyors, and tanks
- Single database for HMI and control functions means there are no communication errors
- Text, numeric display, messaging, and trend charts
- Import any bit map or metafile format graphics to display CAD drawings, company logos, or digital photographs
- Function key and touch screen support to give you flexibility in design

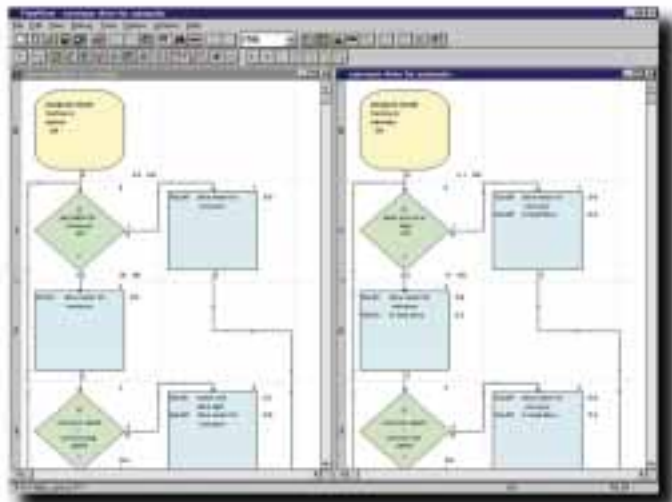
### Communicate to business systems

- OPC (OLE for process control) support allows easy connectivity to other standard software applications at host and ERP levels
- DCOM/COM for communications to other programs or for network communications
- OCX allows direct connections to Visual Basic® and C++ user programs
- Easy serial communication and string manipulation

Visit [www.entity.com](http://www.entity.com) for XP support availability

### Choose Live! when:

- 1) HMI requirements are moderate
- 2) Hardware costs must be kept low
- 3) SQL communications are not required



### System requirements

Pentium 133 MHz CPU or better

64 MB RAM

260 MB HDD (not including OS)

1-800-633-0405

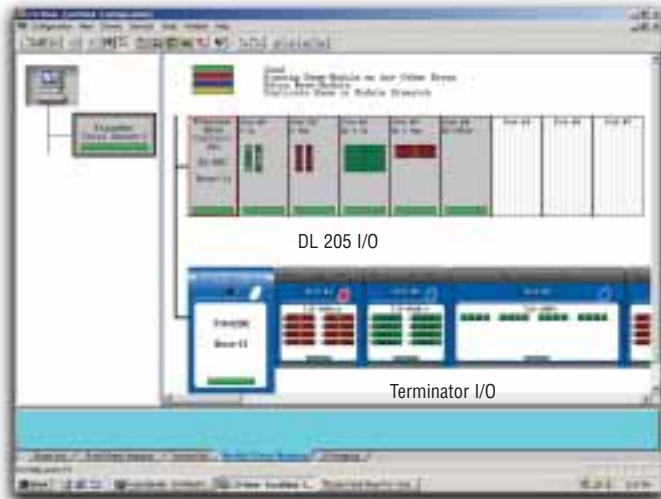
# PC CONTROL: THINK & DO LIVE! FROM ENTIVITY



## Lots of features for a little price

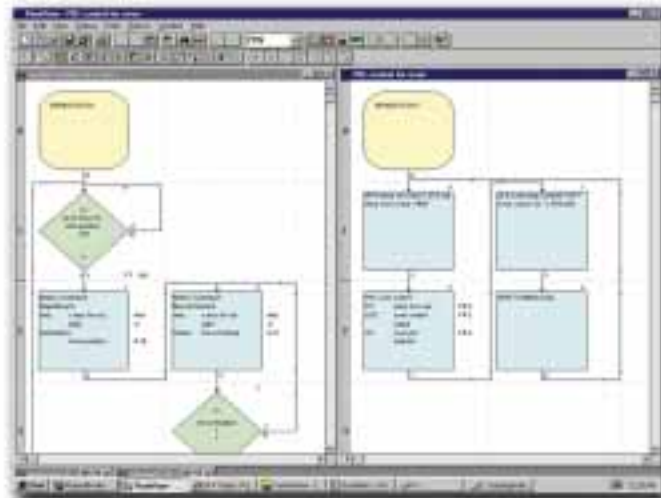
PC-TND-LIVE is only \$1,895.00

Note: Part number to become PC-ENT-LIVE when Live! version 5.5 ships 3rd Qtr 2002



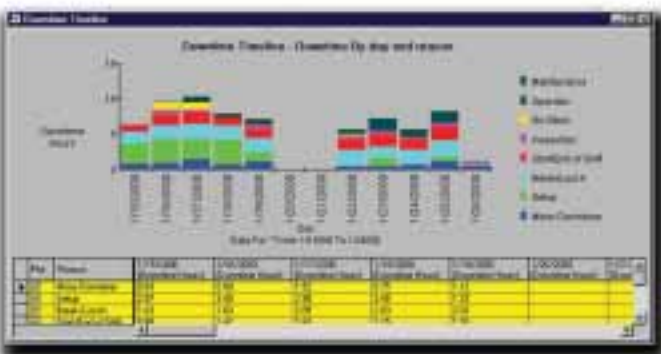
## Easy connection to I/O and serial devices

- All I/O drivers are included, with virtually no limit on I/O tags including Ethernet, Profibus, DeviceNet and SDS
- Built-in serial communication block within the flowchart environment allows easy communication to barcode readers, drives, and other smart devices
- All motion drivers are included for both serial and PC-card based motion



## Integrated motion and PID control with easy-to-use flowchart blocks

- Common flowchart language for motion control independent of the motion card you choose
- All motion parameters accessible to flowcharts and screens
- Several motion drivers supported; check the Entivity Web site for the latest list
- Easy to synchronize motion and control with your flowchart logic
- 64 full function PID loops
- Advanced PID functions like cascaded loops, bumpless transfer, anti-windup and wildflow variables allow you to perform complex process control applications



## Productivity analysis tools:

- Downtime analysis — monitor machine downtime by reason codes to identify production bottlenecks
- Cycletime analysis — View machine cycle time by hour, shift or operator to enable you to increase machine and production yield
- Capacity analysis — compare production yield versus maximum capacity to determine maintenance schedules, identify supply problems, or to justify new equipment purchases

## Also includes:

- Powerful debugging and offline logic testing tools

Check out [www.entivity.com](http://www.entivity.com) for full details